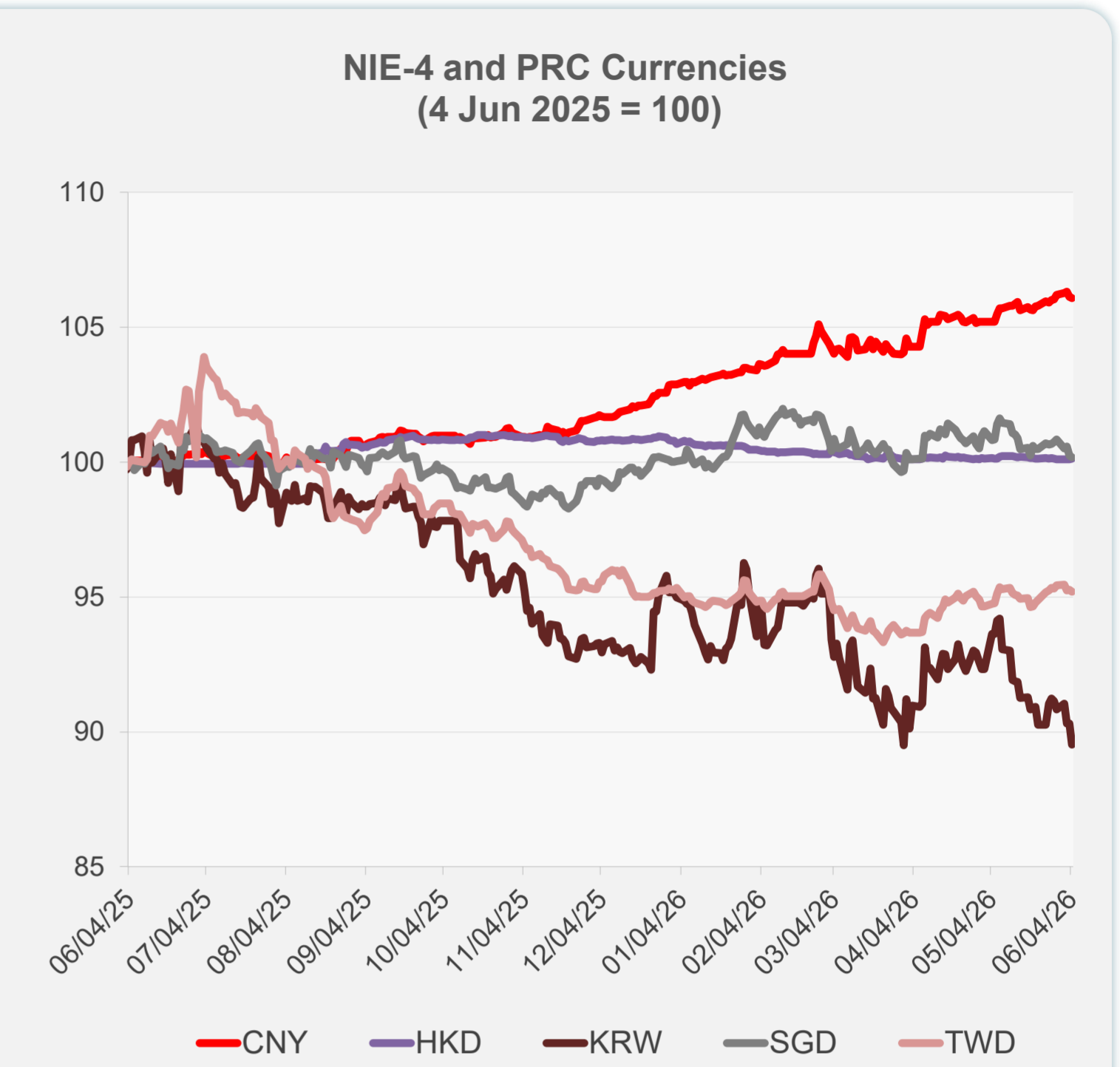
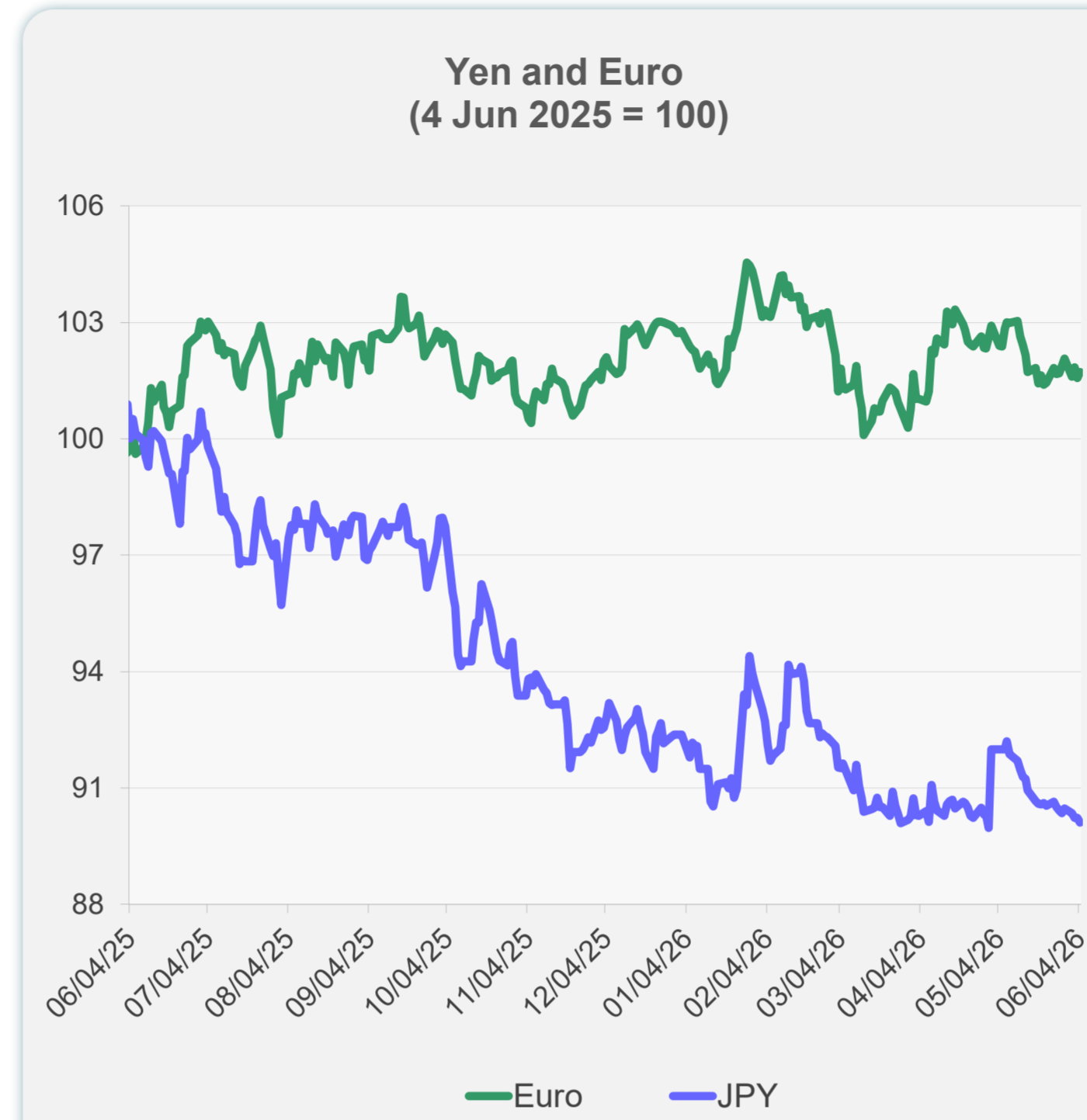
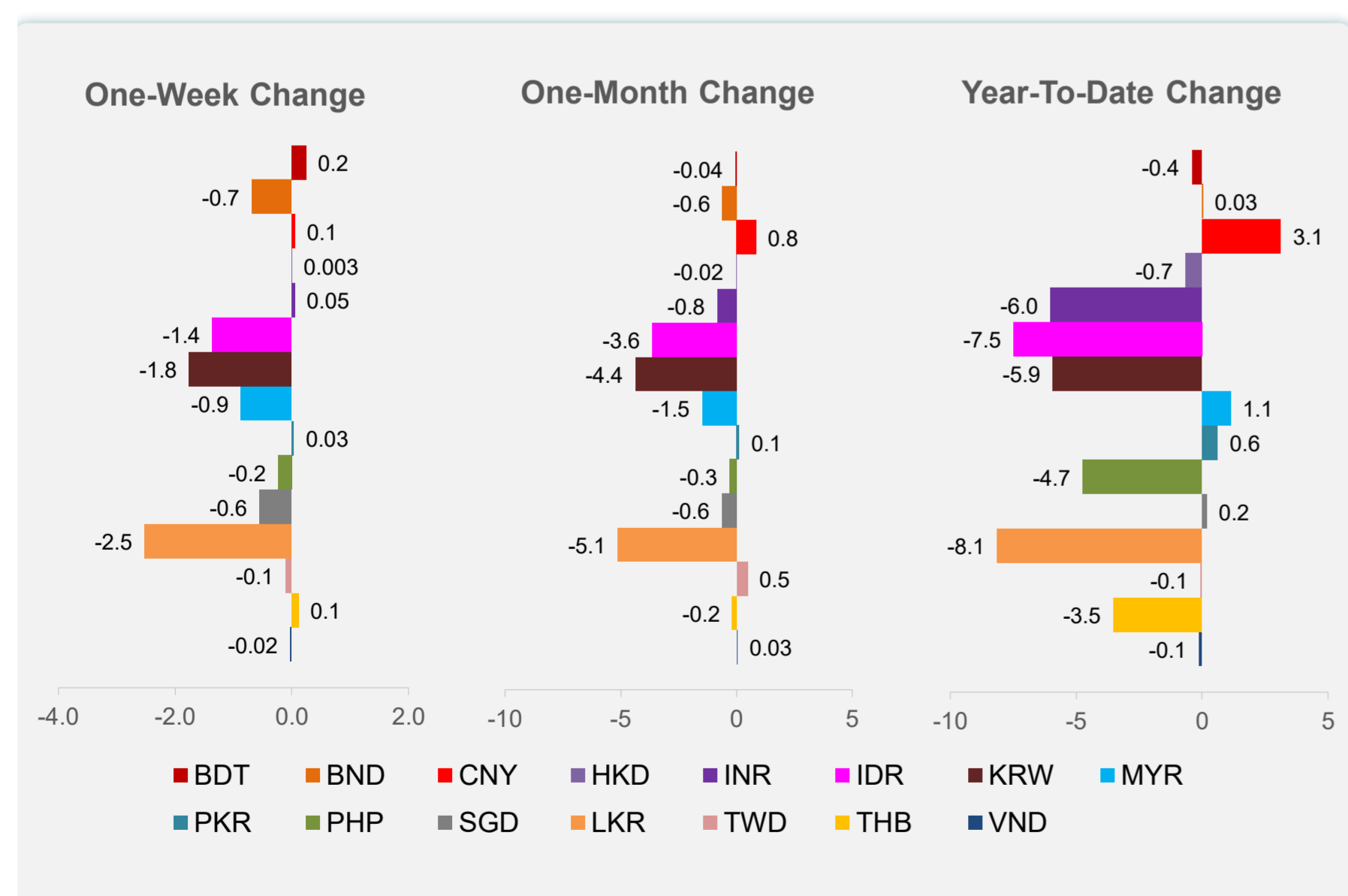
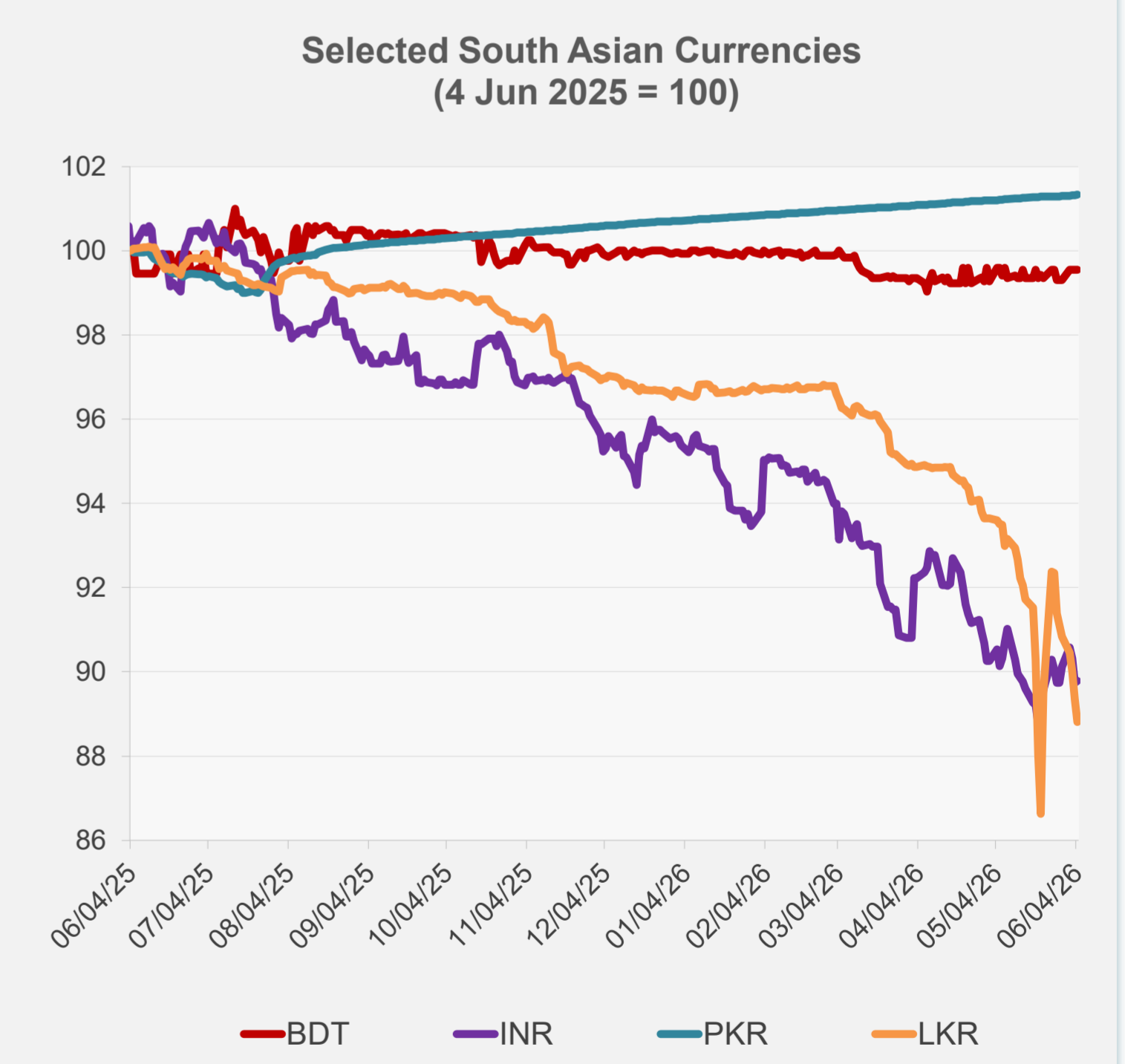
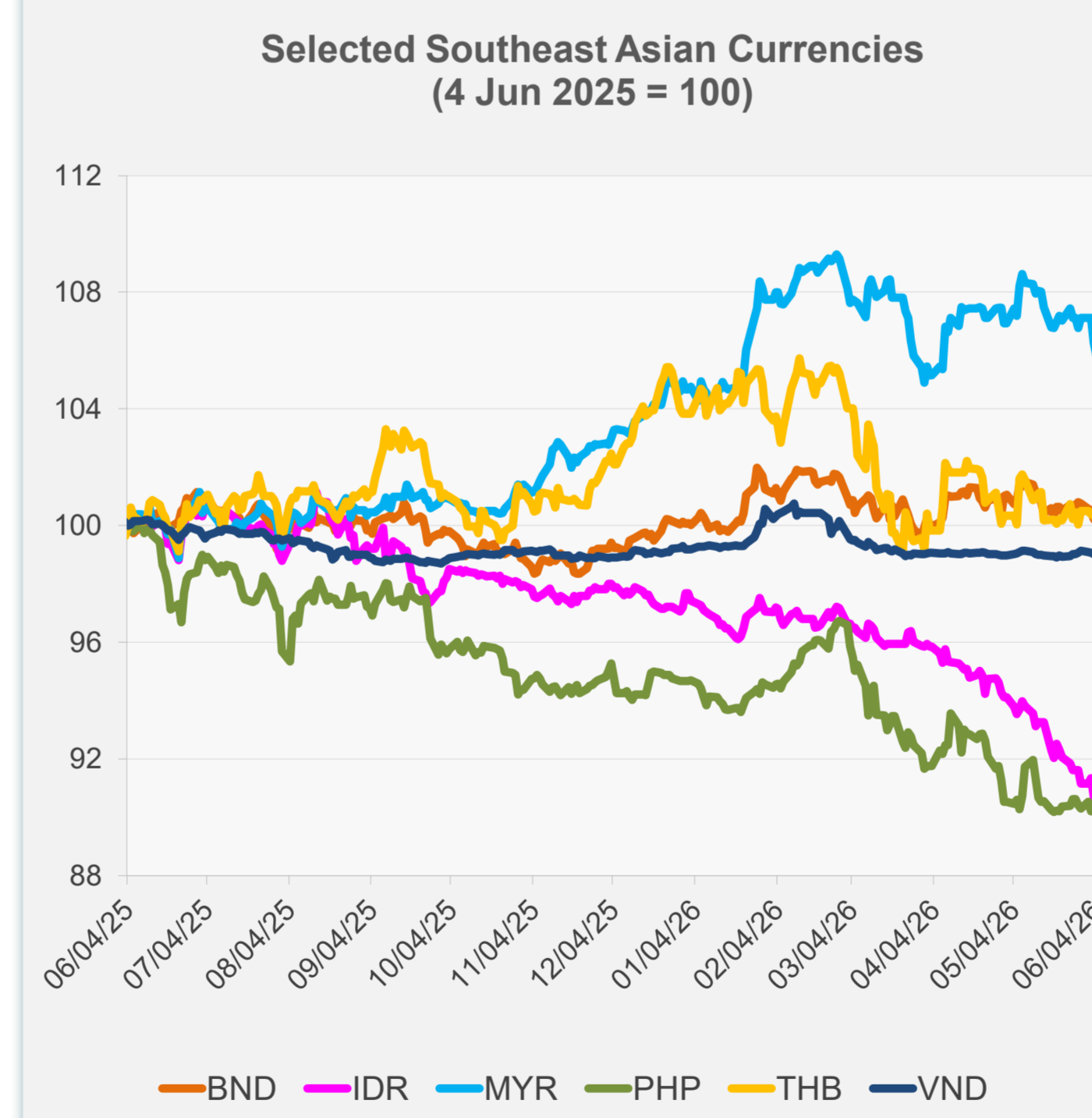


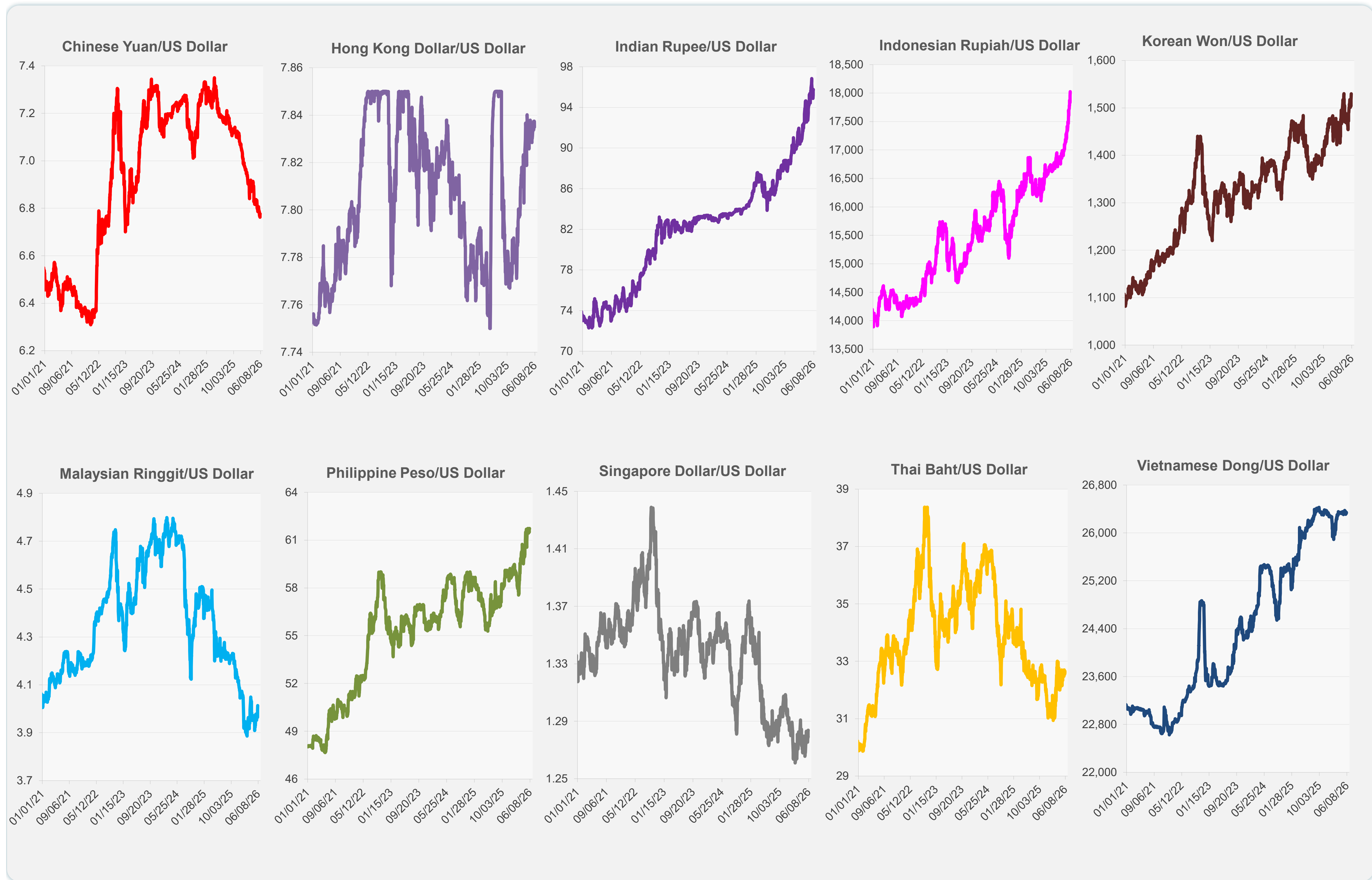
	Latest Closing	% change from Previous Day	% change from 01-Jan-26
Euro	0.86	0.16	-0.97
Japanese yen (JPY)	159.90	-0.13	-2.45
Bangladeshi taka (BDT)	122.75	0.00	-0.41
Brunei dollar (BND)	1.28	-0.09	0.03
Chinese yuan (CNY)	6.78	-0.05	3.12
Hong Kong dollar (HKD)	7.83	0.03	-0.66
Indian rupee (INR)	95.74	0.04	-6.02
Indonesian rupiah (IDR)	18,025.00	-0.39	-7.49
Korean won (KRW)	1,529.70	-0.87	-5.93
Malaysian ringgit (MYR)	4.01	-0.41	1.12
Pakistan rupee (PKR)	278.40	0.01	0.61
Philippine peso (PHP)	61.73	-0.01	-4.73
Singapore dollar (SGD)	1.28	-0.07	0.18
Sri Lanka rupee (LKR)	337.00	-0.59	-8.13
Taipei,China NT dollar (TWD)	31.46	-0.06	-0.07
Thai baht (THB)	32.66	-0.22	-3.53
Vietnamese dong (VND)	26,333.50	0.04	-0.13



NIE = Newly Industrialized Economies

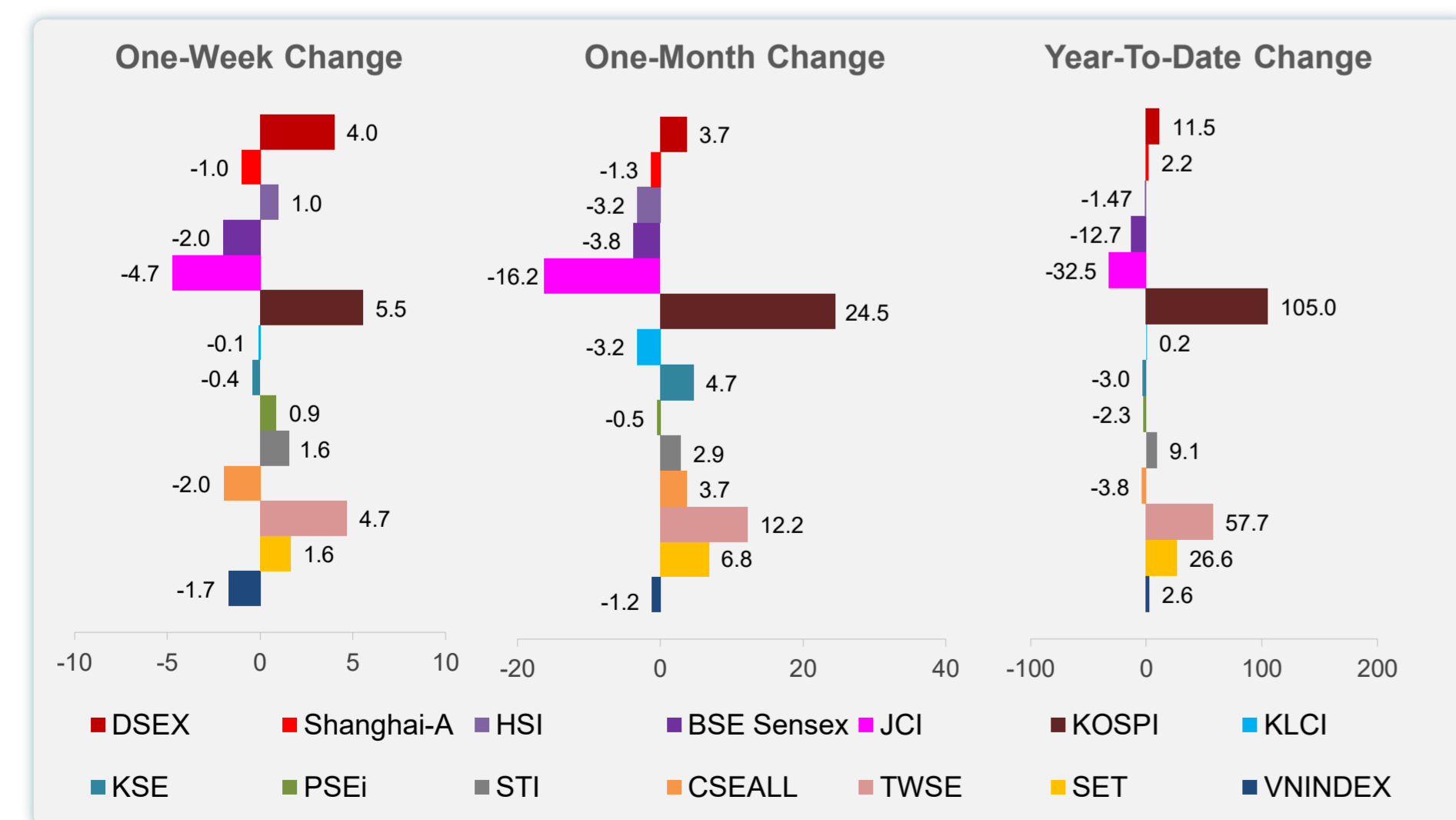
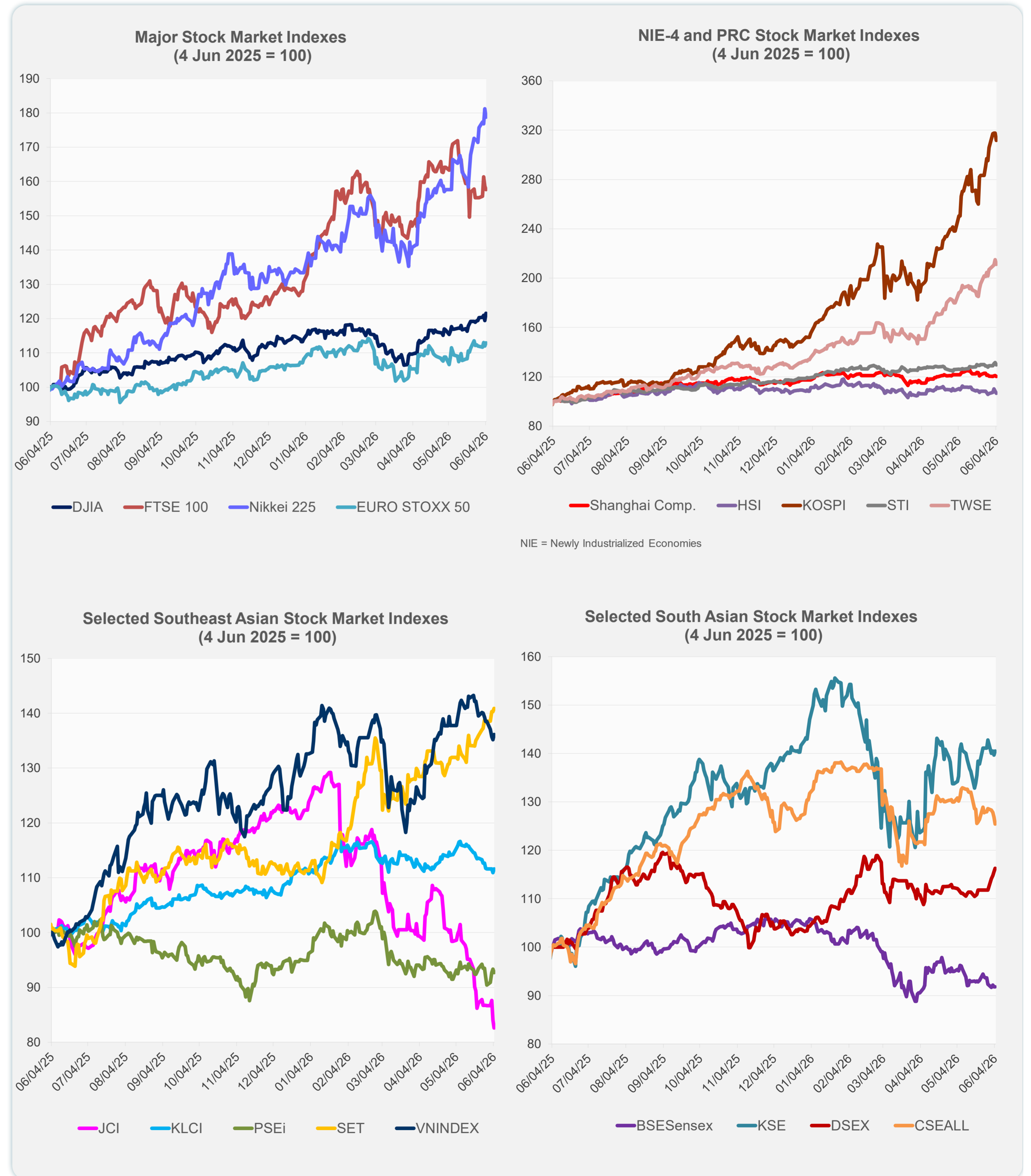


Note: Negative/Decreasing values indicate depreciation of local currency, and positive/increasing values indicate appreciation.
Source: ADB calculations using data from Bloomberg and Haver Analytics.



Source: Haver Analytics.

	Latest Closing	% change from Previous Day	% change from 01-Jan-26
US Dow Jones Ind Avg	51,561.93	1.73	7.28
US NASDAQ	26,830.96	-0.09	15.44
US S&P 500	7,584.31	0.41	10.79
UK FTSE 100	13,872.25	-0.67	23.18
EURO STOXX 50	6,103.33	0.82	5.39
Japan NIKKEI 225	67,470.69	-1.36	34.03
Bangladesh DSEX	5,475.00	0.61	11.49
PRC Shanghai Comp.	4,057.78	-0.64	2.24
Hong Kong, China HSI	25,253.40	-1.48	-1.47
India BSE Sensex	74,360.01	0.02	-12.71
Indonesia JCI	5,839.79	-1.70	-32.46
Korea, Rep. of KOSPI	8,639.41	-1.84	105.01
Malaysia KLCI	1,683.26	0.63	0.19
Pakistan KSE 100	171,202.20	0.60	-2.99
Philippines PSEi	5,911.93	-0.69	-2.33
Singapore STI	5,067.53	-1.38	9.07
Sri Lanka CSEALL	21,760.31	-1.14	-3.82
Taipei, China TWSE	45,677.46	-1.68	57.71
Thailand SET	1,594.79	0.42	26.60
Viet Nam VNINDEX	1,831.55	0.69	2.64



Sources: ADB calculations using data from Bloomberg and CEIC Data Company.



Sources: ADB calculations using data from Bloomberg and CEIC Data Company.

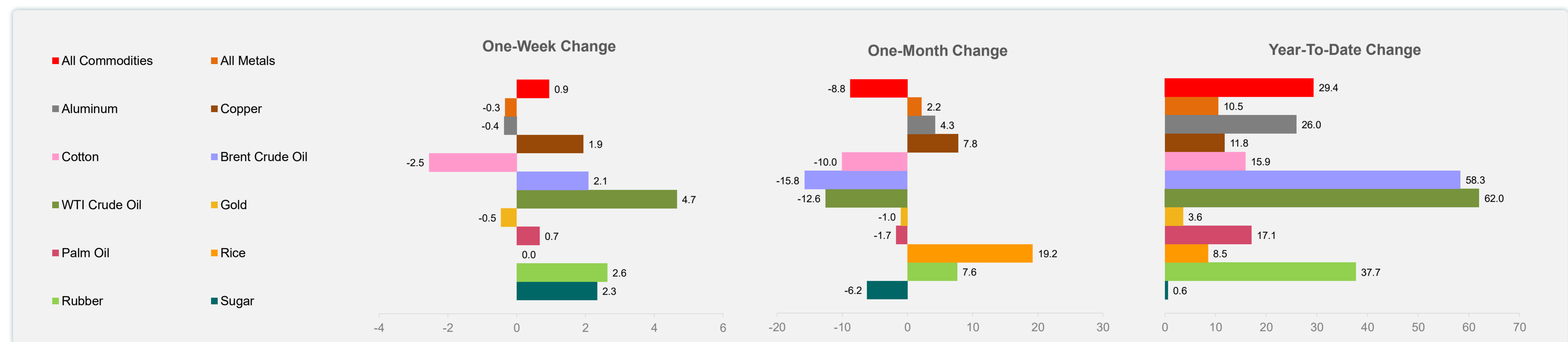
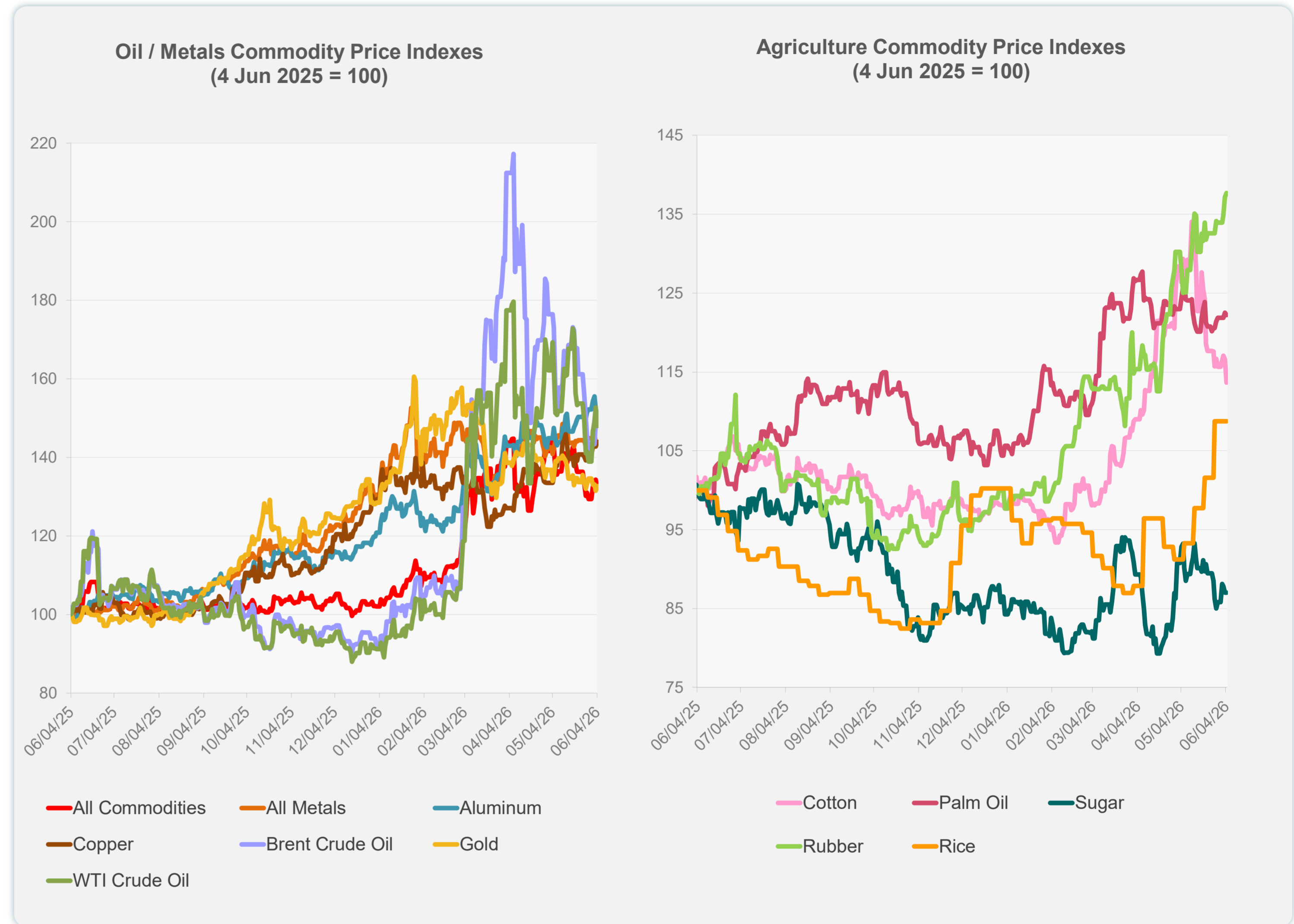
Daily Market Watch
COMMODITY PRICES

5 June 2026, 9:00 AM Manila

	Unit	Latest Closing	% change from Previous Day	% change from 01-Jan-26
S&P All Commodities	US\$	709.54	-1.62	29.36
S&P All Metals	US\$	490.49	0.09	10.53
Aluminum	US\$/metric ton	3,738.21	-0.89	25.95
Copper	US\$/metric ton	13,920.49	0.86	11.78
Cotton	US cents/lb	71.89	-2.50	15.91
Brent Crude Oil	US\$/barrel	98.86	0.04	58.32
WTI Crude Oil	US\$/barrel	93.04	-3.10	62.03
Gold	US\$/troy oz	4,474.80	0.90	3.60
Palm Oil	US\$/metric tonne	1,134.22	-0.24	17.09
Rice ¹	US\$/metric ton	484.00	0.00	8.52
Rubber ²	US\$/kg	296.00	0.34	37.67
Sugar	US cents/lb	14.88	0.00	0.61

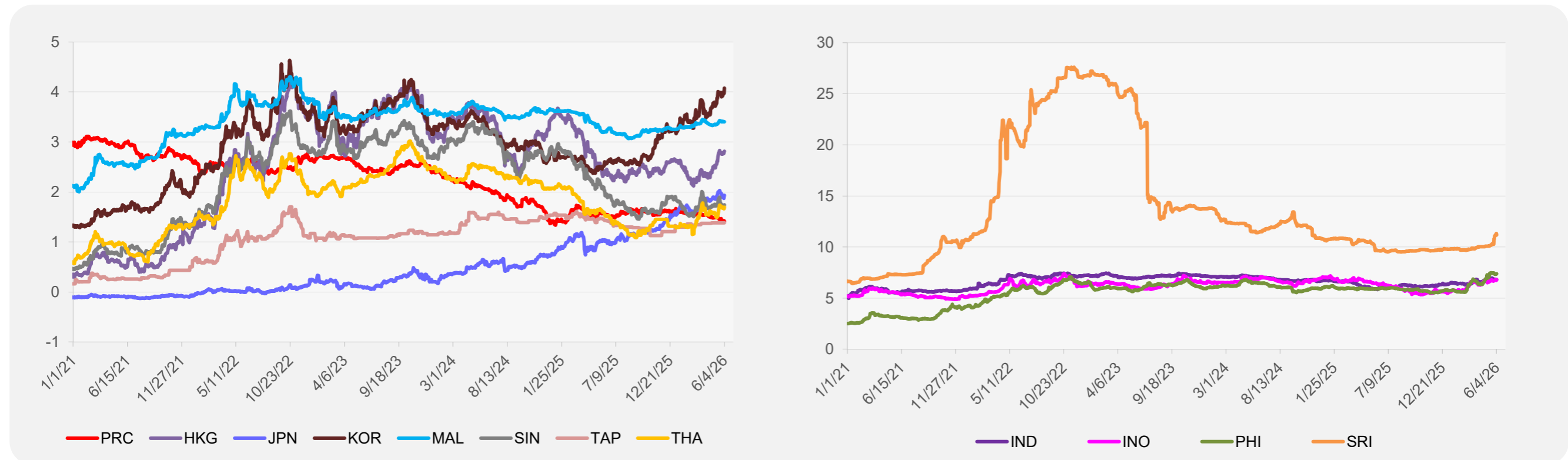
¹ Latest closing price from 27 May 2026.

² Singapore Exchange, Ribbed Smoked Sheet Rubber.

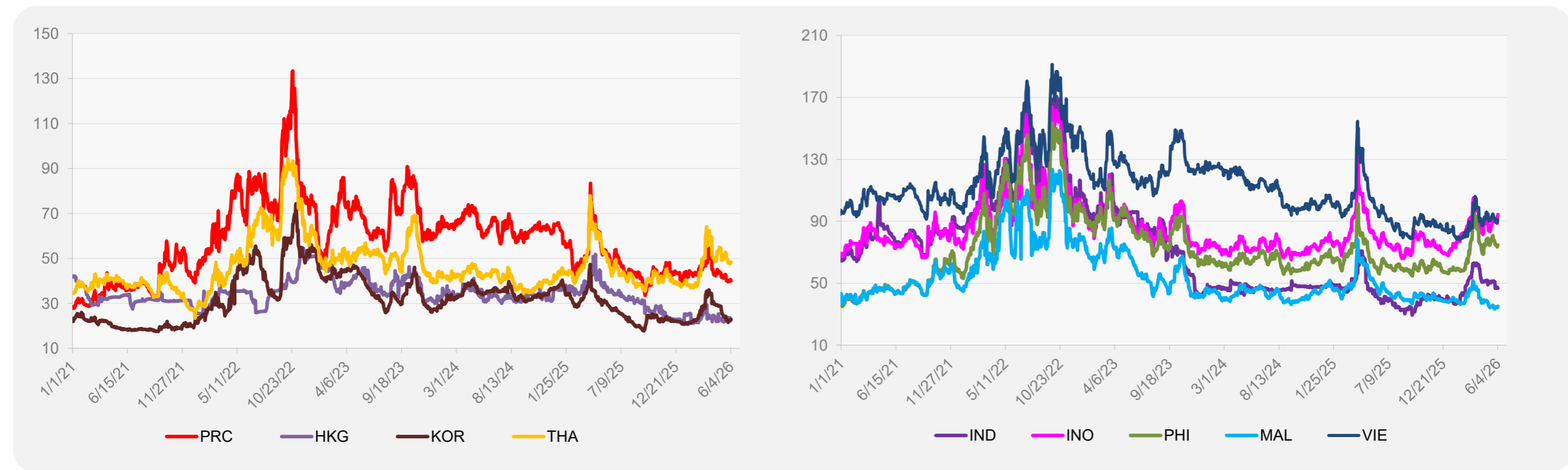


Source: ADB calculations using data from Bloomberg.

5-YEAR LOCAL CURRENCY GOVERNMENT BOND YIELDS (%)



5-YEAR CREDIT DEFAULT SWAP¹



¹ In USD and based on sovereign bonds.
Source: ADB calculations using data from Bloomberg.